

Clinical Pastoral Education at the Bowen Center

For more information and an application contact:

kderstine@thebowncenter.org

540-383-5368

thebowncenter.org/training/CPE

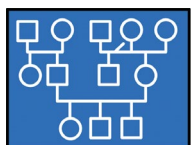
The Eastern Mennonite Seminary CPE Center is accredited to offer CPE levels I and II and supervisory CPE by the:

Association for Clinical Pastoral Education, Inc.
One West Court Square - Suite 325
Decatur GA 30030
Phone: 404-320-1472



**EASTERN MENNONITE
SEMINARY**

In collaboration with:



THE BOWEN CENTER
for the Study of the Family
DEDICATED TO THE DEVELOPMENT AND
DISSEMINATION OF BOWEN THEORY

Clinical Pastoral Education
Eastern Mennonite Seminary
1200 Park Road
Harrisonburg VA 22802

Clinical Pastoral Education

At the Bowen Center for the Study of the Family, Washington D.C.,
in coordination with Eastern Mennonite Seminary



**Congregations
Hospitals
Retirement Communities**



Eastern Mennonite University

**EASTERN MENNONITE
SEMINARY**

CPE at the Bowen Center

In coordination with the accredited ACPE Center of Eastern Mennonite Seminary, the Bowen Center will host an extended unit of CPE that will begin in September 2018.

This unit is intended for faith community leaders, pastors, chaplains, and seminarians who desire to use their ongoing context of ministry for learning and for meeting the programs ministry practice requirements.

Group meetings are conveniently located at the

Bowen Center

**4400 MacArthur Blvd, NW
Ste. 103**

Washington, DC 20007

Find more information about The Bowen Center for the Study of the Family and Eastern Mennonite Seminary at the following websites:

**thebowncenter.org
emu.edu/seminary**

Who might consider this unit?

- ▶ Pastors and chaplains who want to develop their effectiveness in pastoral care.
- ▶ Leaders who want to enhance their understanding of the emotional processes in religious systems and society.
- ▶ Leaders who want to develop their capacity to thrive in ministry despite the tensions and polarizing forces in faith communities and society.
- ▶ Ministering persons who desire a better understanding of Bowen Theory and its applications to leadership and all aspects of ministry.
- ▶ Those seeking the professional credit of a CPE unit to meet ordination, academic, and/or professional certification requirements.

About the program faculty



Kenton Derstine, DMin
ACPE Certified Educator
Bowen Center Faculty

Kenton Derstine, DMin, is associate professor of supervised ministry and has served as the director of the CPE program of Eastern Mennonite Seminary, Harrisonburg, Virginia, since 2000. Prior to EMS, he served as CPE program manager at St. Vincent Hospital in Indianapolis, Indiana. He is ordained for ministry by the Virginia Conference of Mennonite Church. He earned his MDiv from the Anabaptist Mennonite Biblical Seminary and his DMin from Wesley Theological Seminary.

Curriculum components and learning process

A unit of ACPE CPE consists of a minimum of 100 hours of curriculum guided by an ACPE Certified Educator. Curriculum components for this unit will include:

- ▶ Learning in a small group context that meets two days/month from September to April
- ▶ Selected Bowen Center conferences
- ▶ Lectures by Bowen Center faculty
- ▶ Individual learning goals
- ▶ Case study method of learning; reflection on the practice of ministry
- ▶ Individual consultation
- ▶ Assigned and self-selected reading
- ▶ Exploration of one's own multi-generational family relationships
- ▶ Theological reflection
- ▶ Explorations in the science of human behavior
- ▶ An approved context for ministry: pastors, chaplains seminary interns invited to propose that their ongoing context of ministry serve to meet ACPE ministry practice requirements.

A unique program designed to allow ministering persons to utilize their current position to fulfill practice ministry requirements of a unit of CPE.